



## Stand Alone Tong Configuration

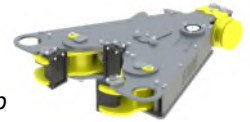


9-7/8" -60k Tong with Stand Alone Mounting Kit  
P/N: 79.60.06.33.01  
Quantity: \_\_\_\_\_

## Tong with Backup Configuration



9-7/8" -60k Tong with Backup Mounting Kit  
P/N: 79.60.06.33.02  
Quantity: \_\_\_\_\_



10-3/4" -60k Backup  
P/N: 86B.60.01.03  
Quantity: \_\_\_\_\_

## Accessories for Stand Alone Tong



Lift Cylinder Assembly  
P/N: 200276  
Quantity: \_\_\_\_\_

Tension Load Cell  
36" Handle, 75k Rated  
P/N: 19-207653-139  
Quantity: \_\_\_\_\_



Spring Hanger, 3000#  
P/N: 11.85.000.01  
Quantity: \_\_\_\_\_



Lift Cylinder Assembly  
P/N: 200276  
Quantity: \_\_\_\_\_

Compression Load Cell  
36" Handle, 75k Rated  
P/N: 19-207161-115  
Quantity: \_\_\_\_\_



Spring Hanger, 3000#  
P/N: 11.85.000.01  
Quantity: \_\_\_\_\_

## Tong Jaw and Die Carrier Selection

| TONG JAW SELECTIONS |                     |              |               |
|---------------------|---------------------|--------------|---------------|
| PIPE SIZE           | JAW KIT PART NUMBER | AVAILABILITY | QTY. TO ORDER |
| 4-1/2"              | 20.079.036.00 KIT   | ✳            |               |
| 5"                  | 20.079.040.00 KIT   | ✓            |               |
| 5-1/2"              | 20.079.044.00 KIT   | ✓            |               |
| 6"                  | 20.079.048.00 KIT   | ✓            |               |
| 6-5/8"              | 20.079.053.00 KIT   | ✳            |               |
| 7"                  | 20.079.056.00 KIT   | ✓            |               |
| 7-5/8"              | 20.079.061.00 KIT   | ✓            |               |
| 7-3/4"              | 20.079.062.00 KIT   | ✳            |               |
| 7-7/8"              | 20.079.063.00 KIT   | ✓            |               |
| 8-1/4"              | 20.079.066.00 KIT   | ✳            |               |
| 8-5/8"              | 20.079.069.00 KIT   | ✓            |               |
| 9"                  | 20.079.072.00 KIT   | ✳            |               |
| 9-5/8"              | 20.079.077.00 KIT   | ✓            |               |
| 9-7/8"              | 20.079.079.00 KIT   | ✳            |               |

✓ = AVAILABLE ; ✳ = MADE TO ORDER



For complete listing of Tong Jaw Availability and Die Carrier Availability refer to "Jaw Reference Manual" available on the Starr Power Tong's Portal.

| BACKUP DIE CARRIER SELECTIONS |                             |              |               |
|-------------------------------|-----------------------------|--------------|---------------|
| PIPE SIZE                     | DIE CARRIER KIT PART NUMBER | AVAILABILITY | QTY. TO ORDER |
| 3-1/2"                        | 26.086.028.00 KIT           | ✳            |               |
| 4"                            | 26.086.032.00 KIT           | ✳            |               |
| 4-1/2"                        | 26.086.036.00 KIT           | ✳            |               |
| 5"                            | 26.086.040.00 KIT           | ✓            |               |
| 5-1/2"                        | 26.086.044.00 KIT           | ✓            |               |
| 6"                            | 26.086.048A.00 KIT          | ✓            |               |
| 6-1/4"                        | 26.086.050.00 KIT           | ✳            |               |
| 6-5/8"                        | 26.086.053.00 KIT           | ✳            |               |
| 7"                            | 26.086.056.00 KIT           | ✓            |               |
| 7-5/8"                        | 26.086.061.00 KIT           | ✓            |               |
| 7-7/8"                        | 26.086.063.00 KIT           | ✓            |               |
| 8-1/4"                        | 26.086.066.00 KIT           | ✳            |               |
| 8-1/2"                        | 26.086.068.00 KIT           | ✳            |               |
| 8-5/8"                        | 26.086.069.00 KIT           | ✓            |               |
| 9"                            | 26.086.072.00 KIT           | ✳            |               |
| 9-5/8"                        | 26.086.077.00 KIT           | ✓            |               |
| 9-7/8"                        | 26.086.079.00 KIT           | ✳            |               |

✓ = AVAILABLE ; ✳ = MADE TO ORDER