



Stand Alone Tong Configuration

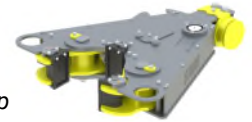


9-7/8" -40k Tong with Stand Alone Mounting Kit
P/N: 79.60.03.33.01
Quantity: _____

Tong with Backup Configuration



9-7/8" -40k Tong with Backup Mounting Kit
P/N: 79.60.03.33.02
Quantity: _____



10-3/4" -60k Backup
P/N: 86B.60.01.03
Quantity: _____

Accessories for Stand Alone Tong



Lift Cylinder Assembly
P/N: 200276
Quantity: _____

Tension Load Cell
36" Handle, 50k Rated
P/N: 19-207400-159-SPT
Quantity: _____



Spring Hanger, 3000#
P/N: 11.85.000.01
Quantity: _____



Lift Cylinder Assembly
P/N: 200276
Quantity: _____

Compression Load Cell
36" Handle, 50k Rated
P/N: 19-207120-149
Quantity: _____



Spring Hanger, 3000#
P/N: 11.85.000.01
Quantity: _____

Tong Jaw and Die Carrier Selection

TONG JAW SELECTIONS			
PIPE SIZE	JAW KIT PART NUMBER	AVAILABILITY	QTY. TO ORDER
4-1/2"	20.079.036.00 KIT	☼	
5"	20.079.040.00 KIT	☑	
5-1/2"	20.079.044.00 KIT	☑	
6"	20.079.048.00 KIT	☑	
6-5/8"	20.079.053.00 KIT	☼	
7"	20.079.056.00 KIT	☑	
7-5/8"	20.079.061.00 KIT	☑	
7-3/4"	20.079.062.00 KIT	☼	
7-7/8"	20.079.063.00 KIT	☑	
8-1/4"	20.079.066.00 KIT	☼	
8-5/8"	20.079.069.00 KIT	☑	
9"	20.079.072.00 KIT	☼	
9-5/8"	20.079.077.00 KIT	☑	
9-7/8"	20.079.079.00 KIT	☼	

☑ = AVAILABLE ; ☼ = MADE TO ORDER



For complete listing of Tong Jaw Availability and Die Carrier Availability refer to "Jaw Reference Manual" available on the Starr Power Tong's Portal.

BACKUP DIE CARRIER SELECTIONS			
PIPE SIZE	DIE CARRIER KIT PART NUMBER	AVAILABILITY	QTY. TO ORDER
3-1/2"	26.086.028.00 KIT	☼	
4"	26.086.032.00 KIT	☼	
4-1/2"	26.086.036.00 KIT	☼	
5"	26.086.040.00 KIT	☑	
5-1/2"	26.086.044.00 KIT	☑	
6"	26.086.048A.00 KIT	☑	
6-1/4"	26.086.050.00 KIT	☼	
6-5/8"	26.086.053.00 KIT	☼	
7"	26.086.056.00 KIT	☑	
7-5/8"	26.086.061.00 KIT	☑	
7-7/8"	26.086.063.00 KIT	☑	
8-1/4"	26.086.066.00 KIT	☼	
8-1/2"	26.086.068.00 KIT	☼	
8-5/8"	26.086.069.00 KIT	☑	
9"	26.086.072.00 KIT	☑	
9-5/8"	26.086.077.00 KIT	☑	
9-7/8"	26.086.079.00 KIT	☼	

☑ = AVAILABLE ; ☼ = MADE TO ORDER