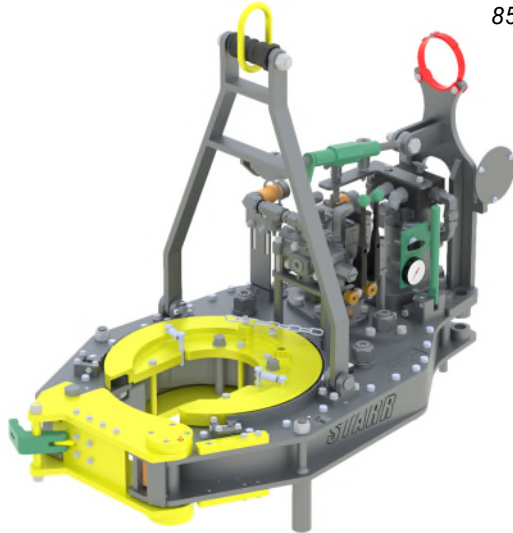




Stand Alone Tong Configuration



8595-SMF 16k Tong with Stand
Alone Mounting Kit
P/N: 77S.16.03.32.01
Quantity: _____

Accessories for Stand Alone Tong



Lift Cylinder Assembly
P/N: 200276
Quantity: _____



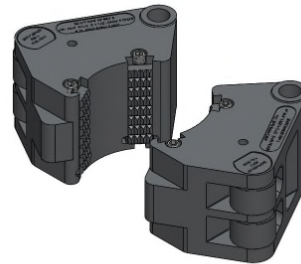
Spring Hanger, 2000#
P/N: 11.85.000.00
Quantity: _____



Tension Load Cell
36" Handle, 40k Rated
P/N: 19-207400-150-SPT
Quantity: _____

Tong Jaw Selection

TONG JAW SELECTIONS			
PIPE SIZE	JAW KIT PART NUMBER	AVAILABILITY	QTY. TO ORDER
4-1/2"	20.077.036.02 KIT	☑	
5"	20.077.040.02 KIT	☑	
5-1/2"	20.077.044.02 KIT	☑	
6"	20.077.048.02 KIT	☑	
7"	20.077.056.02 KIT	☑	
7-5/8"	20.077.061.02 KIT	☑	
8-5/8"	20.077.069.02 KIT	☑	
9-5/8"	20.077.077.02 KIT	☑	
☑ = AVAILABLE ; ☒ = MADE TO ORDER			



For complete listing of Tong Jaw Availability and Die Carrier Availability refer to "Jaw Reference Manual" available on the Starr Power Tong's Portal.