



Stand Alone Tong Configuration

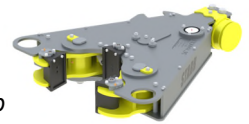


7-5/8" -30k Tong with Stand Alone Mounting Kit
P/N: 69C.30.03.33.01
Quantity: _____

Tong with Backup Configuration



7-5/8" -30k Tong with Backup Mounting Kit
P/N: 69C.30.03.33.02
Quantity: _____



10-3/4" -40k Backup
P/N: 86B.40.01.01
Quantity: _____

Accessories for Stand Alone Tong



Lift Cylinder Assembly
P/N: 200276
Quantity: _____

Tension Load Cell
36" Handle, 40k Rated
P/N: 19-207400-150-SPT
Quantity: _____



Spring Hanger, 2000#
P/N: 11.85.000.00
Quantity: _____



Lift Cylinder Assembly
P/N: 200276
Quantity: _____

Compression Load Cell
36" Handle, 40k Rated
P/N: 19-207120-141-SPT
Quantity: _____

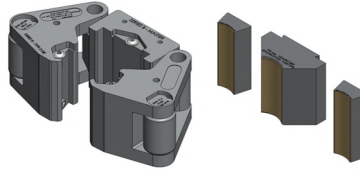


Spring Hanger, 3000#
P/N: 11.85.000.01
Quantity: _____

Tong Jaw and Die Carrier Selection

WRAP AROUND TONG JAW & DIE SELECTIONS			
PIPE SIZE	DIE KIT PART NUMBER (COARSE GRIT)	AVAILABILITY	QTY. TO ORDER
2.38" thru 3.50"	20.061.028.WR KIT	☑	
	2-3/8" 27A.061.019.GO KIT	☑	
	2-7/8" 27A.061.023.GO KIT	☑	
	3-1/2" 27A.061.028.GO KIT	☑	

☑ = AVAILABLE ; ☒ = MADE TO ORDER



TONG JAW SELECTIONS (Dressed with Coarse Grit Dies)			
PIPE SIZE	JAW KIT PART NUMBER	AVAILABILITY	QTY. TO ORDER
3-1/2"	20.061.028.G1 3JAW KIT	☒	
4"	20.061.032.G1 3JAW KIT	☑	
4-1/2"	20.061.036.G1 3JAW KIT	☑	
5"	20.061.040.G1 3JAW KIT	☑	
5-1/2"	20.061.044.G1 3JAW KIT	☑	
6"	20.061.048.G1 3JAW KIT	☑	
6-5/8"	20.061.053.G1 3JAW KIT	☑	
7"	20.061.056.G1 3JAW KIT	☑	
7-5/8"	20.061.061.G1 3JAW KIT	☑	

☑ = AVAILABLE ; ☒ = MADE TO ORDER



BACKUP DIE CARRIER SELECTIONS (Dressed with Coarse Grit Dies)			
PIPE SIZE	DIE CARRIER KIT PART NUMBER	AVAILABILITY	QTY. TO ORDER
2-3/8"	26.086.019.GO KIT	☒	
2-7/8"	26.086.023.GO KIT	☒	
3-1/2"	26.086.028.GO KIT	☒	
4"	26.086.032.GO KIT	☒	
4-1/2"	26.086.036.GO KIT	☒	
5"	26.086.040.GO KIT	☑	
5-1/2"	26.086.044.GO KIT	☑	
6"	26.086.048.GO KIT	☑	
6-5/8"	26.086.053.GO KIT	☒	
7"	26.086.056.GO KIT	☑	
7-5/8"	26.086.061.GO KIT	☑	
8-5/8"	26.086.069.GO KIT	☑	
9-5/8"	26.086.077.GO KIT	☑	
9-7/8"	26.086.079.GO KIT	☒	

☑ = AVAILABLE ; ☒ = MADE TO ORDER

For complete listing of Tong Jaw Availability and Die Carrier Availability refer to "Jaw Reference Manual" available on the Starr Power Tongs Portal.