



Stand Alone Tong Configuration

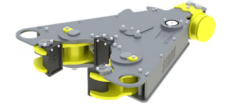


8-5/8" -35k Tong with Stand Alone Mounting Kit
P/N: 69B.35.03.33.01
Quantity: _____

Tong with Backup Configuration



8-5/8" -35k Tong with Backup Mounting Kit
P/N: 69B.35.03.33.02
Quantity: _____



10-3/4" -40k Backup
P/N: 86B.40.01.01
Quantity: _____

Accessories for Stand Alone Tong



Lift Cylinder Assembly
P/N: 200276
Quantity: _____

Tension Load Cell
36" Handle, 40k Rated
P/N: 19-207400-150-SPT
Quantity: _____



Spring Hanger, 2000#
P/N: 11.85.000.00
Quantity: _____



Lift Cylinder Assembly
P/N: 200276
Quantity: _____

Compression Load Cell
36" Handle, 40k Rated
P/N: 19-207120-141-SPT
Quantity: _____

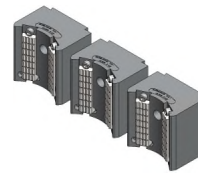
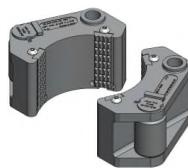


Spring Hanger, 3000#
P/N: 11.85.000.01
Quantity: _____

Tong Jaw and Die Carrier Selection

TONG JAW SELECTIONS			
PIPE SIZE	JAW KIT PART NUMBER	AVAILABILITY	QTY. TO ORDER
3-1/2"	20.069.028.00 KIT	☑	
3-7/8"	20.069.031.00 KIT	☑	
4-1/2"	20.069.036.00 KIT	☑	
5"	20.069.040.00 KIT	☑	
5-1/2"	20.069.044.00 KIT	☑	
6-5/8"	20.069.053.00 KIT	☑	
7"	20.069.056.00 KIT	☺	
7-5/8"	20.069.061.00 KIT	☑	

☑ = AVAILABLE ; ☺ = MADE TO ORDER



BACKUP DIE CARRIER SELECTIONS			
PIPE SIZE	DIE CARRIER KIT PART NUMBER	AVAILABILITY	QTY. TO ORDER
3-1/2"	26.086.028.00 KIT	☺	
4"	26.086.032.00 KIT	☺	
4-1/2"	26.086.036.00 KIT	☺	
5"	26.086.040.00 KIT	☑	
5-1/2"	26.086.044.00 KIT	☑	
6"	26.086.048A.00 KIT	☑	
6-1/4"	26.086.050.00 KIT	☺	
6-5/8"	26.086.053.00 KIT	☺	
7"	26.086.056.00 KIT	☑	
7-5/8"	26.086.061.00 KIT	☑	
8-5/8"	26.086.069.00 KIT	☑	
9"	26.086.072.00 KIT	☺	
9-5/8"	26.086.077.00 KIT	☑	
9-7/8"	26.086.079.00 KIT	☺	

☑ = AVAILABLE ; ☺ = MADE TO ORDER

For complete listing of Tong Jaw Availability and Die Carrier Availability refer to "Jaw Reference Manual" available on the Starr Power Tong Portal.