

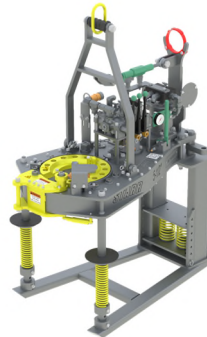


Stand Alone Tong Configuration



5-1/2" -21k Tong with Stand Alone Mounting Kit
P/N: 44.25.01.33.01
Quantity: _____

Tong with Backup Configuration



5-1/2" -21k Tong with Backup Mounting Kit
P/N: 44.25.01.33.02
Quantity: _____



6-1/4" 25k Backup
P/N: 44.25.01.05
Quantity: _____

Accessories for Stand Alone Tong



Lift Cylinder Assembly
P/N: 200276
Quantity: _____

Tension Load Cell
36" Handle, 30k Rated
P/N: 19-207400-145-SPT
Quantity: _____



Spring Hanger, 2000#
P/N: 11.85.000.00
Quantity: _____



Lift Cylinder Assembly
P/N: 200276
Quantity: _____

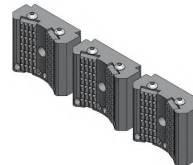
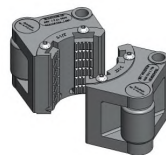
Compression Load Cell
36" Handle, 30k Rated
P/N: 19-207800-147
Quantity: _____



Spring Hanger, 2000#
P/N: 11.85.000.00
Quantity: _____

Tong Jaw and Die Carrier Selection

TONG JAW SELECTIONS			
PIPE SIZE	JAW KIT PART NUMBER	AVAILABILITY	QTY. TO ORDER
2-3/8"	20.044.019.00 KIT	☑	
2-7/8"	20.044.023.00 KIT	☑	
3-1/2"	20.044.028.00 KIT	☑	
4"	20.044.032.00 KIT	☑	
4-1/2"	20.044.036.00 KIT	☑	
5"	20.044.040.00 KIT	☑	
☑ = AVAILABLE ; ☒ = MADE TO ORDER			
5-1/2"	20.044.044.WR KIT	☑	
"20.044.044.WR KIT" for use with 27B.044 Die Series			



BACKUP DIE CARRIER SELECTIONS			
PIPE SIZE	DIE CARRIER KIT PART NUMBER	AVAILABILITY	QTY. TO ORDER
2-3/8"	26.044.019.00 KIT	☑	
2-7/8"	26.044.023.00 KIT	☑	
3-1/2"	26.044.028.00 KIT	☑	
4"	26.044.032.00 KIT	☑	
4-1/2"	26.044.036.00 KIT	☑	
5"	26.044.040.00 KIT	☑	
5-1/2"	26.044.044.00 KIT	☑	
6"	26.044.048.00 KIT	☑	
6-1/4"	26.044.050.00 KIT	☑	
☑ = AVAILABLE ; ☒ = MADE TO ORDER			

For complete listing of Tong Jaw Availability and Die Carrier Availability refer to "Jaw Reference Manual" available on the Starr Power Tong Portal.