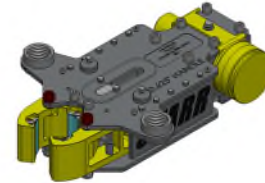




Tong with Backup Configuration



3-1/2" -9k Tong with Backup Mounting Kit
P/N: 28.09.03.43.02
Quantity: _____



4-1/2" -9k Backup
P/N: 36.09.01.05
Quantity: _____

Accessories for Tong with Backup



Lift Cylinder Assembly
P/N: 200276
Quantity: _____



Spring Hanger, 2000#
P/N: 11.85.000.00
Quantity: _____

Compression Load Cell
20-1/2" Handle, 10k Rated
P/N: 19-207644-109
Quantity: _____



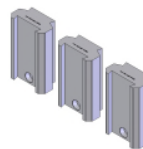
Tong Jaw, Die Adapter and Wrap Around Die Selection

Wrap Around Jaw Kit
1.66" - 2.25" Pipe Sizes
P/N: 20.036.018.WR KIT

	TONG JAW & CRA DIE SELECTIONS			QTY. TO ORDER
	PIPE SIZE	DIE PART NUMBER (COARSE GRIT)	AVAILABILITY	
1.66" thru 2.25"	20.036.018.WR KIT			☑
	1.660"	27A.061.013.GO	☑	
	1.750"	27A.061.014.GO	☑	
	1.990"	27A.061.016.GO	☑	
	2-1/8"	27A.061.017.GO	☑	
	2-1/4"	27A.061.018.GO	☑	
2.38" thru 3.50"	20.036.028.WR KIT			☑
	2-3/8"	27A.061.019.GO	☑	
	2-7/8"	27A.061.023.GO	☑	
	3-1/2"	27A.061.028.GO	☑	

☑ = AVAILABLE ; ☑ = MADE TO ORDER

Wrap Around Jaw Kit
2.38" - 3.5" Pipe Sizes
P/N: 20.036.028.WR KIT



Wrap Around Dies are sold Individually, tong requires (3) dies backup also requires (3) dies.



Wrap Around Die Adapter Kit
1.66" - 2.25" Pipe Sizes
P/N: 23.36.004.T1 KIT

	BACKUP DIE ADAPTER & CRA DIE SELECTIONS			QTY. TO ORDER
	PIPE SIZE	DIE PART NUMBER (COARSE GRIT)	AVAILABILITY	
1.66" thru 2.25"	23.36.004.T1 KIT			☑
	1.660"	27A.061.013.GO	☑	
	1.750"	27A.061.014.GO	☑	
	1.990"	27A.061.016.GO	☑	
	2-1/8"	27A.061.017.GO	☑	
2.38" thru 3.50"	23.36.004.T2 KIT			☑
	2-3/8"	27A.061.019.GO	☑	
	2-7/8"	27A.061.023.GO	☑	
	3-1/2"	27A.061.028.GO	☑	
3.63" thru 4.50"	No Adapter Kit Required			
	3-5/8"	27A.061.029.GO	☑	
	3-7/8"	27A.061.031.GO	☑	
	4"	27A.061.032.GO	☑	
	4-1/2"	27A.061.036.GO	☑	

☑ = AVAILABLE ; ☑ = MADE TO ORDER

Wrap Around Die Adapter Kit
2.38" - 3.5" Pipe Sizes
P/N: 23.36.004.T2 KIT

For complete listing of Tong Jaw Availability and Die Carrier Availability refer to "Jaw Reference Manual" available on the Starr Power Tong's Portal.