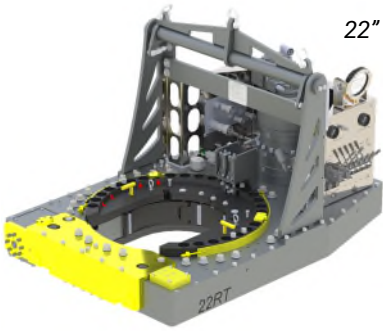




## Stand Alone Tong Configuration

## Tong with Backup Configuration

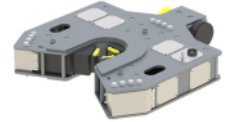


22" - 150k Tong with Stand Alone Mounting Kit  
P/N: 176.150.T3.45.01  
Quantity: \_\_\_\_\_

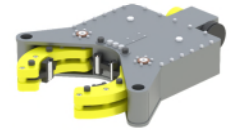


22" - 150k Tong with Compression Backup Mounting Kit; P/N: 176.150.T3.46.02  
Quantity: \_\_\_\_\_

23" - 150k Long Stroke Backup  
P/N: 184.150.03.03  
Quantity: \_\_\_\_\_

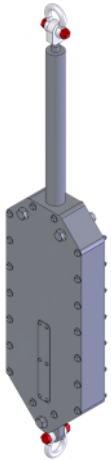


23" - 150k RT Backup  
P/N: 184.150.02.03  
Quantity: \_\_\_\_\_

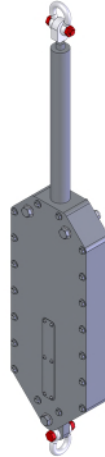


## Accessories for Stand Alone Tong

## Accessories for Tong with Backup



Spring Hanger / Lift Cylinder Combined Assembly  
8000# Rating  
P/N: SLC8k.11.00.000.00  
Quantity: \_\_\_\_\_



Spring Hanger / Lift Cylinder Combined Assembly  
12000# Rating  
P/N: SLC12k.11.00.000.00  
Quantity: \_\_\_\_\_

Tension Load Cell  
54" Handle, 175k Rated  
P/N: 19-207108-550  
Quantity: \_\_\_\_\_



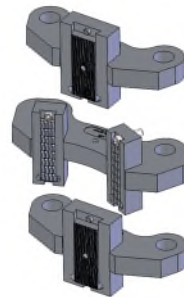
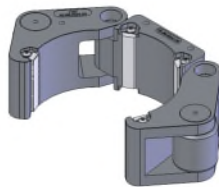
Compression Load Cell  
45" Handle, 175k Rated  
P/N: 19-207367-110  
Quantity: \_\_\_\_\_



## Tong Jaw and Die Carrier Selection

TONG JAW SELECTIONS			
PIPE SIZE	JAW KIT PART NUMBER	AVAILABILITY	QTY. TO ORDER
4-1/2"	20.176RT.036.00 3JAW KIT	☑	
5"	20.176RT.040.00 3JAW KIT	☑	
5-1/2"	20.176RT.044.00 3JAW KIT	☑	
6"	20.176RT.048.00 3JAW KIT	☑	
6-5/8"	20.176RT.053.00 3JAW KIT	☑	
7"	20.176RT.056.00 3JAW KIT	☑	
7-5/8"	20.176RT.061.00 3JAW KIT	☑	
8-5/8"	20.176RT.069.00 3JAW KIT	☑	
9-5/8"	20.176RT.077.00 3JAW KIT	☑	
10-3/4"	20.176RT.086.00 3JAW KIT	☑	
11-3/4"	20.176RT.094.00 3JAW KIT	☑	
12-3/4"	20.176RT.102.00 3JAW KIT	☑	
13-5/8"	20.176RT.109.00 3JAW KIT	☑	
14"	20.176RT.112.00 3JAW KIT	☑	
16"	20.176RT.128.00 3JAW KIT	☑	
18-5/8"	20.176RT.149.00 3JAW KIT	☑	
20"	20.176RT.160.00 3JAW KIT	☑	
21"	20.176RT.168.00 3JAW KIT	☑	
22"	20.176RT.176.00 3JAW KIT	☑	

☑ = AVAILABLE ; ☑ = MADE TO ORDER



For complete listing of Tong Jaw Availability and Die Carrier Availability refer to "Jaw Reference Manual" available on the Starr Power Tong's Portal.

BACKUP DIE CARRIER SELECTIONS			
PIPE SIZE	DIE CARRIER KIT PART NUMBER	AVAILABILITY	QTY. TO ORDER
4-1/2"	26.184RT.036.00 KIT	☑	
5"	26.184RT.040.00 KIT	☑	
5-1/2"	26.184RT.044.00 KIT	☑	
6"	26.184RT.048.00 KIT	☑	
6-5/8"	26.184RT.053.00 KIT	☑	
7"	26.184RT.056.00 KIT	☑	
7-5/8"	26.184RT.061.00 KIT	☑	
8-5/8"	26.184RT.069.00 KIT	☑	
9-5/8"	26.184RT.077.00 KIT	☑	
10-3/4"	26.184RT.086.00 KIT	☑	
11-3/4"	26.184RT.094.00 KIT	☑	
12-3/4"	26.184RT.102.00 KIT	☑	
13-5/8"	26.184RT.109.00 KIT	☑	
14"	26.184RT.112.00 KIT	☑	
15"	26.184RT.120.00 KIT	☑	
16"	26.184RT.128.00 KIT	☑	
18-5/8"	26.184RT.149.00 KIT	☑	
20"	26.184RT.160.00 KIT	☑	
21"	26.184RT.168.00 KIT	☑	
22"	26.184RT.176.00 KIT	☑	
23"	26.184RT.184.00 KIT	☑	

☑ = AVAILABLE ; ☑ = MADE TO ORDER