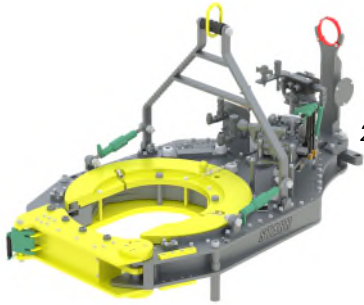




Stand Alone Tong Configuration

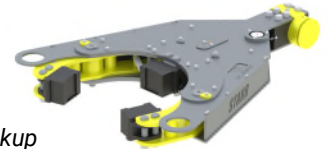


21" - 55k Tong with Stand Alone Mounting Kit
 P/N: 168.85.03.33.01
 Quantity: _____

Tong with Backup Configuration

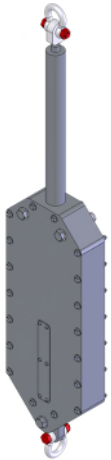


21" - 55k Tong with Backup Mounting Kit
 P/N: 168.85.03.33.02
 Quantity: _____



22" - 130k Backup
 P/N: 176.130.01.03
 Quantity: _____

Accessories for Stand Alone Tong

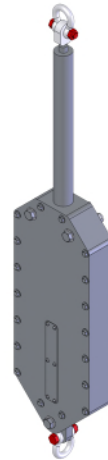


Spring Hanger / Lift Cylinder Combined Assembly
 4000# Rating
 P/N: SLC4k.11.00.000.00
 Quantity: _____

Tension Load Cell
 52" Handle, 60k Rated
 P/N: 19-207400-180
 Quantity: _____



Accessories for Tong with Backup



Spring Hanger / Lift Cylinder Combined Assembly
 6000# Rating
 P/N: SLC6k.11.00.000.00
 Quantity: _____

Compression Load Cell
 52" Handle, 60k Rated
 P/N: 19-207120-168
 Quantity: _____



Tong Jaw and Die Carrier Selection

TONG JAW SELECTIONS			
PIPE SIZE	JAW KIT PART NUMBER	AVAILABILITY	QTY. TO ORDER
8-5/8"	20.168.069.02 KIT	★	
9-5/8"	20.168.077.02 KIT	★	
10-3/4"	20.168.086.02 KIT	★	
11-3/4"	20.168.094.02 KIT	★	
11-7/8"	20.168.095.02 KIT	★	
12-3/4"	20.168.102.02 KIT	★	
13-3/8"	20.168.107.02 KIT	★	
13-5/8"	20.168.109.02 KIT	★	
14"	20.168.112.00 KIT	★	
16"	20.168.128.00 KIT	★	
18-5/8"	20.168.149.00 KIT	★	
20"	20.168.160.00 KIT	★	
21"	20.168.168.00 KIT	★	

☑ = AVAILABLE ; ★ = MADE TO ORDER



BACKUP DIE CARRIER SELECTIONS			
PIPE SIZE	DIE CARRIER KIT PART NUMBER	AVAILABILITY	QTY. TO ORDER
8-5/8"	26.117.069.00 KIT	☑	
9-5/8"	26.117.077.00 KIT	☑	
9-7/8"	26.117.079.00 KIT	☑	
10-3/4"	26.117.086.00 KIT	☑	
11-3/4"	26.117.094.00 KIT	☑	
12-3/4"	26.117.102.00 KIT	☑	
13-3/8"	26.117.107.00 KIT	☑	
13-5/8"	26.117.109.00 KIT	☑	
14"	26.117.112.00 KIT	☑	
15"	26.117.120.00 KIT	☑	
16"	26.176.128.00 KIT	★	
18-5/8"	26.176.149.00 KIT	★	
20"	26.176.160.00 KIT	★	
21"	26.176.168.00 KIT	★	
22"	26.176.176.00 KIT	★	

☑ = AVAILABLE ; ★ = MADE TO ORDER

For complete listing of Tong Jaw Availability and Die Carrier Availability refer to "Jaw Reference Manual" available on the Starr Power Tong's Portal.