



## Stand Alone Tong Configuration



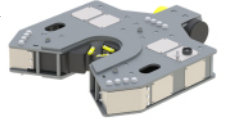
14" - 130k Tong with Stand Alone Mounting Kit  
P/N: 112.130.T3.45.01  
Quantity: \_\_\_\_\_

## Tong with Backup Configuration

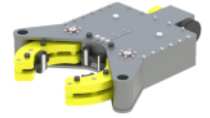


14" - 130k Tong with Compression Backup Mounting Kit; P/N: 112.130.T3.46.02  
Quantity: \_\_\_\_\_

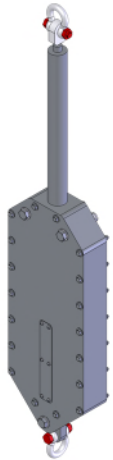
15" - 150k Long Stroke Backup  
P/N: 120.130.03.03  
Quantity: \_\_\_\_\_



15" - 150k RT Backup  
P/N: 120.130.02.03  
Quantity: \_\_\_\_\_



## Accessories for Stand Alone Tong

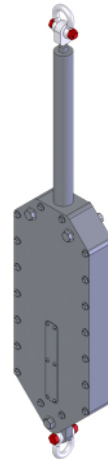


Spring Hanger / Lift Cylinder Combined Assembly  
8000# Rating  
P/N: SLC8k.11.00.000.00  
Quantity: \_\_\_\_\_

Tension Load Cell  
49" Handle, 150k Rated  
P/N: 19-207108-540  
Quantity: \_\_\_\_\_



## Accessories for Tong with Backup



Spring Hanger / Lift Cylinder Combined Assembly  
12000# Rating  
P/N: SLC12k.11.00.000.00  
Quantity: \_\_\_\_\_

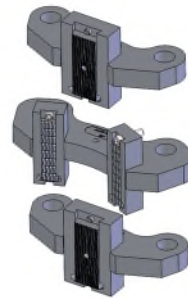
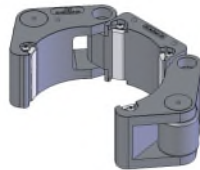
Compression Load Cell  
42" Handle, 150k Rated  
P/N: 19-207367-107  
Quantity: \_\_\_\_\_



## Tong Jaw and Die Carrier Selection

| TONG JAW SELECTIONS |                          |              |               |
|---------------------|--------------------------|--------------|---------------|
| PIPE SIZE           | JAW KIT PART NUMBER      | AVAILABILITY | QTY. TO ORDER |
| 3-1/2"              | 20.112RT.028.00 3JAW KIT | ☺            |               |
| 4"                  | 20.112RT.032.00 3JAW KIT | ☺            |               |
| 4-1/2"              | 20.112RT.036.00 3JAW KIT | ☺            |               |
| 5"                  | 20.112RT.040.00 3JAW KIT | ☺            |               |
| 5-1/2"              | 20.112RT.044.00 3JAW KIT | ☺            |               |
| 6"                  | 20.112RT.048.00 3JAW KIT | ☺            |               |
| 6-5/8"              | 20.112RT.053.00 3JAW KIT | ☺            |               |
| 7"                  | 20.112RT.056.00 3JAW KIT | ☺            |               |
| 7-5/8"              | 20.112RT.061.00 3JAW KIT | ☺            |               |
| 8-5/8"              | 20.112RT.069.00 3JAW KIT | ☺            |               |
| 9-5/8"              | 20.112RT.077.00 3JAW KIT | ☺            |               |
| 10-3/4"             | 20.112RT.086.00 3JAW KIT | ☺            |               |
| 11-3/4"             | 20.112RT.094.00 3JAW KIT | ☺            |               |
| 12-3/4"             | 20.112RT.102.00 3JAW KIT | ☺            |               |
| 13-5/8"             | 20.112RT.109.00 3JAW KIT | ☺            |               |
| 14"                 | 20.112RT.112.00 3JAW KIT | ☺            |               |

☑ = AVAILABLE ; ☺ = MADE TO ORDER



For complete listing of Tong Jaw Availability and Die Carrier Availability refer to "Jaw Reference Manual" available on the Starr Power Tong's Portal.

| BACKUP DIE CARRIER SELECTIONS |                             |              |               |
|-------------------------------|-----------------------------|--------------|---------------|
| PIPE SIZE                     | DIE CARRIER KIT PART NUMBER | AVAILABILITY | QTY. TO ORDER |
| 3-1/2"                        | 26.120RT.028.00 KIT         | ☺            |               |
| 4"                            | 26.120RT.032.00 KIT         | ☺            |               |
| 4-1/2"                        | 26.120RT.036.00 KIT         | ☺            |               |
| 5"                            | 26.120RT.040.00 KIT         | ☺            |               |
| 5-1/2"                        | 26.120RT.044.00 KIT         | ☺            |               |
| 6"                            | 26.120RT.048.00 KIT         | ☺            |               |
| 6-5/8"                        | 26.120RT.053.00 KIT         | ☺            |               |
| 7"                            | 26.120RT.056.00 KIT         | ☺            |               |
| 7-5/8"                        | 26.120RT.061.00 KIT         | ☺            |               |
| 8-5/8"                        | 26.120RT.069.00 KIT         | ☺            |               |
| 9-5/8"                        | 26.120RT.077.00 KIT         | ☺            |               |
| 10-3/4"                       | 26.120RT.086.00 KIT         | ☺            |               |
| 11-3/4"                       | 26.120RT.094.00 KIT         | ☺            |               |
| 12-3/4"                       | 26.120RT.102.00 KIT         | ☺            |               |
| 13-5/8"                       | 26.120RT.109.00 KIT         | ☺            |               |
| 14"                           | 26.120RT.112.00 KIT         | ☺            |               |
| 15"                           | 26.120RT.120.00 KIT         | ☺            |               |

☑ = AVAILABLE ; ☺ = MADE TO ORDER