

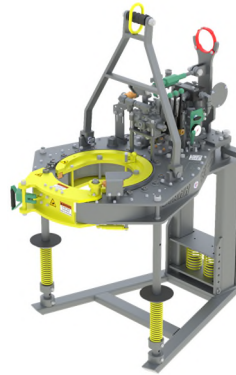


Stand Alone Tong Configuration



13-5/8" - 35k Tong with Stand Alone Mounting Kit
P/N: 109.35.03.33.01
Quantity: _____

Tong with Backup Configuration



13-5/8" - 35k Tong with Backup Mounting Kit
P/N: 109.35.03.33.02
Quantity: _____



15" - 75k Backup
P/N: 120.75.01.01
Quantity: _____

Accessories for Stand Alone Tong



Lift Cylinder Assembly
P/N: 200276
Quantity: _____

Tension Load Cell
36" Handle, 40k Rated
P/N: 19-207400-150-SPT
Quantity: _____



Spring Hanger, 2000#
P/N: 11.85.000.00
Quantity: _____



Lift Cylinder Assembly
P/N: 200276
Quantity: _____

Compression Load Cell
36" Handle, 40k Rated
P/N: 19-207120-141-SPT
Quantity: _____

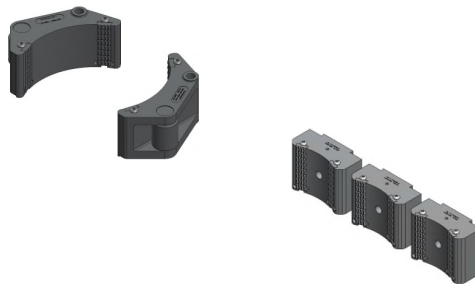


Spring Hanger, 3000#
P/N: 11.85.000.01
Quantity: _____

Tong Jaw and Die Carrier Selection

TONG JAW SELECTIONS			
PIPE SIZE	JAW KIT PART NUMBER	AVAILABILITY	QTY. TO ORDER
5"	20.109.040.00 KIT	☑	
5-1/2"	20.109.044.00 KIT	☑	
6-5/8"	20.109.053.00 KIT	☑	
7"	20.109.056.00 KIT	☑	
7-5/8"	20.109.061.00 KIT	☑	
9-5/8"	20.109.077.00 KIT	☑	
9-7/8"	20.109.079.00 KIT	☑	
10-3/4"	20.109.086.00 KIT	☑	
11-3/4"	20.109.094.00 KIT	☑	
12-3/4"	20.109.102.00 KIT	☑	
13-3/8"	20.109.107.00 KIT	☑	

☑ = AVAILABLE ; ☒ = MADE TO ORDER



BACKUP DIE CARRIER SELECTIONS			
PIPE SIZE	DIE CARRIER KIT PART NUMBER	AVAILABILITY	QTY. TO ORDER
7"	26.117.056.00 KIT	☑	
7-5/8"	26.117.061.00 KIT	☑	
8-5/8"	26.117.069.00 KIT	☑	
9-5/8"	26.117.077.00 KIT	☑	
9-7/8"	26.117.079.00 KIT	☑	
10-3/4"	26.117.086.00 KIT	☑	
11-3/4"	26.117.094.00 KIT	☑	
12-3/4"	26.117.102.00 KIT	☑	
13-3/8"	26.117.107.00 KIT	☑	
13-5/8"	26.117.109.00 KIT	☑	
14"	26.117.112.00 KIT	☑	
15"	26.117.120.00 KIT	☑	

☑ = AVAILABLE ; ☒ = MADE TO ORDER

For complete listing of Tong Jaw Availability and Die Carrier Availability refer to "Jaw Reference Manual" available on the Starr Power Tong's Portal.